



OSAKA, KANSAI, JAPAN  
**EXPO**  
2025

## Exhibition Guide

Application Deadline:  
Mar. 21 (Fri.), 2025



Supporting Organization:  
Japan Association for the 2025 World Exposition

# Future Monodzukuri International EXPO

# 2025

Date

2025  
**July 16-19**  
Wed. Sat.

10:00 am to 5:00 pm  
\*Until 4:00 pm on the last day

Venue

**INTEX OSAKA, Japan**

### Concurrent Events

**JISH+W**  
Japan International Trade Fair for  
Occupational Safety & Health + Well-being

Well-being *Technology* Exhibition Well-being *Construction Technology* Exhibition

Well-being *Fine Bubble Industry* Exhibition

Organizer: Future Monodzukuri International EXPO Executive Committee



## Greeting

Expo 2025 Osaka, Kansai will be held as an international exposition under the theme of "Designing Future Society for Our Lives" toward the realization of SDGs and wellbeing in addition to utilizing the latest technologies such as digital, robotics, and GX. In light of this situation, Future Monodzukuri International EXPO Executive Committee held the first "Future Monodzukuri International EXPO" in Osaka in May 2023 with the cooperation of the Japan Association for the 2025 World Exposition and other related organizations. As an international trade fair in conjunction with the Expo 2025 Osaka, Kansai, Future Monodzukuri International EXPO will bring together outstanding products and technologies supporting industries and disseminate them both domestically and internationally. This fair also facilitates opportunities for business meetings and interaction through exhibits and forums.

Future Monodzukuri International EXPO 2025, held in July is along with the event dates of Expo 2025 Osaka, Kansai. A large number of exhibitors and visitors from Japan and overseas are expected to participate.

We look forward to your exhibits and cutting-edge technologies solving industrial issues and design a bright future society.



©Expo 2025



## Exhibition Outline

### Onsite

**Date :** Jul. 16 (Wed.) – 19 (Sat.), 2025  
**Opening Hours :** 10:00 am to 5:00 pm \*until 4:00 pm on Jul. 19  
**Venue :** INTEX OSAKA, JAPAN  
**Admission :** Free \* Registration required  
\*No need to register for the age of under junior high school students

### Online (on the website)

**Date :** Jul. 1 (Tue.) – 31 (Thu.), 2025  
**Admission :** Free \* Registration required

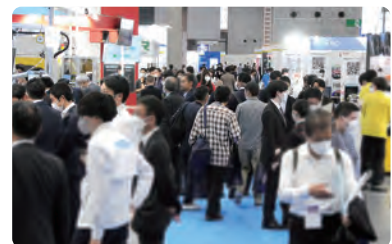
**Organizer :** Future Monodzukuri International EXPO Executive Committee  
 (MONODZUKURI.Nihon.Conference / Osaka Convention & Tourism Bureau / Osaka Cross Industry Council / Osaka City Industrial Management Association / SKC International Corporate Development Organization / Association for Rational Administration (Osaka) Incorporation / Japan Robot Association / Fine Bubble Industries Association / The Institute of Global Safety Promotion / 3S Activity Promotion Association / THE NIKKAN KOGYO SHIMBUN)

**Co-Organizers :** MONODZUKURI.Nihon.Conference  
 THE NIKKAN KOGYO SHIMBUN (TEAM EXPO 2025 Programme / Co-creation Partner)

**Supporting Organization :** Japan Association for the 2025 World Exposition

**Cooperating Organizations :** Ministry of Economy, Trade and Industry / Ministry of Internal Affairs and Communications / Ministry of Land, Infrastructure, Transport and Tourism / Ministry of Health, Labour and Welfare / Japan External Trade Organization (JETRO) / Organization for Small & Medium Enterprises and Regional Innovation, JAPAN / New Energy and Industrial Technology Development Organization (NEDO) / National Institute of Advanced Industrial Science and Technology / Osaka Prefectural Government / Osaka City / Higashi Osaka City / Osaka Convention & Tourism Bureau / Osaka Business Development Agency / The Japan Chamber of Commerce and Industry / The Osaka Chamber of Commerce and Industry / The Higashiosaka Chamber of Commerce and Industry / International Institute for Advanced Studies / Japan Business Federation / Kansai Economic Federation / Kansai Association of Corporate Executives / Japan Machinery Federation / Japan Robot Association / Nippon Electric Control Equipment Industries Association / Fine Bubble Industries Association / The Institute of Global Safety Promotion / Micro Manufacturing Association / 3S Activity Promotion Association etc.

**Concurrent Events :** Japan International Trade Fair for Occupational Safety and Health + Well-being (JIOSH+W) [Organizer: Messe Düsseldorf Japan]  
 Well-being Technology Exhibition ..... Specialized exhibition for enhancing productivity, safety, and cost-effectiveness.  
 Well-being Construction Technology Exhibition ... Specialized exhibition for enhancing productivity, safety, and cost-effectiveness in construction sites.  
 Well-being Fine Bubble Industry Exhibition ..... Specialized exhibition for improving the environment and enhancing safety and cost-effectiveness through fine bubble washing effects.



## Locations of INTEX Osaka and EXPO2025 Venues

Osaka Metro Chuo Line has been expanded for the closest Yumeshima Station to EXPO2025 venues from the Cosmosquare Station in January 2025. Concurrent events will also be held alongside the main exhibition at EXPO Messe (Common call: WASSE) during the period of Future Monodzukuri International EXPO.



Provided by Japan Association for the 2025 World Exposition



## Exhibit Category

### ● Manufacturing Core Technology

Metal machine tool, Metal forming machine, Machine accessory, Numerical control unit, Sensor, Inspection / Measurement, Material / Electronic material, Various tools, etc.

#### Microfabrication Zone

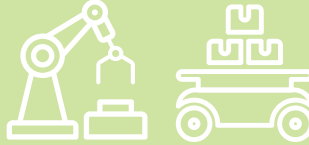
For Microfabrication technology, Processing machines, Tools, etc.

#### Small-lot Production / Prototype Plaza

For companies specializing in small-lot production and prototype processing.

### ● Robot / Robot Related Technology

Industrial robot, Service robot, Robot Sler (Robot System Integrator), Robot simulation & Vision systems, Transfer robot, AGV, etc.



### ● Advanced Technology

DX (Digital transformation), IoT (Internet of Things), AI, Metaverse, Drone, etc.



#### Smart Mobility Zone

For mobility utilizing advanced technologies such as self-driving technology, AI, etc.

#### Human Resource Development Zone

For human resource development services and products utilizing IT, AI, etc.

### ● Water Technology / Fine Bubble / Environmental Technology

Fine bubble, Water related technology, Green infrastructure, Carbon neutral, Environmental purification technology, etc.

#### GX (Green Transformation) Zone

For products and services utilizing clean energy with low environmental impact.



### ● Factory Construction / Factory Disaster Prevention

Technology and systems related to factory construction, energy-saving systems in factories, security, preventive maintenance, BCP, in-factory maintenance, disaster prevention and mitigation systems, etc.



### ● Aerospace

Space equipment, Space related systems / services / devices, Satellite utilization business, etc.



### ● Well-being Tech

Technologies and products in various industrial fields (manufacturing and construction/civil engineering and machinery/electricity, environment, and daily life) for making people and society Well-being "happy, safe, healthy, convenient, and resilient".



## Raw Booth Rental Fee / Booth Specification

All the Onsite exhibitors will be provided the Online exhibiting booth for free!

### 1 Raw Booth Rental Fee

(Width 2.97m x Depth 2.97m x Height 2.7m : Approx. 9m<sup>2</sup>)

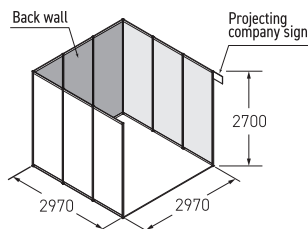
Special price for companies and organizations participating in TEAM EXPO 2025 programme

**JPY 341,000** (Tax included)

General price

**JPY 396,000** (Tax included)

#### 【 Inline Booth 】

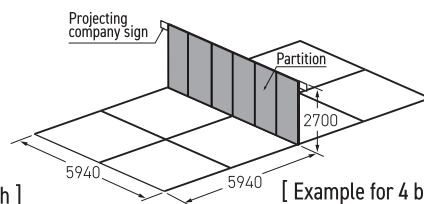


[ Example for 1 booth ]

#### 【 Multiple Raw Booth 】

\*Depth: 2 booths or more

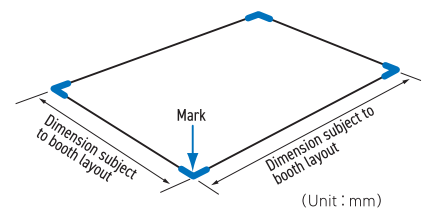
\*The number of aisles may change depending on the layout.



[ Example for 4 booths ]  
In case of 3 side aisles open

#### 【 Island Booth 】

\*Applicable for 8 booths or more



(Unit : mm)

\*Power supplies, lights, carpets, etc. are not included in any type of booth.

\*For corner booths, the partition on the aisle side will not be provided. \*In principle, back wall cannot be removed.

### 【Option】 Package Display \*Reference : Basic Package Display for 1 Booth

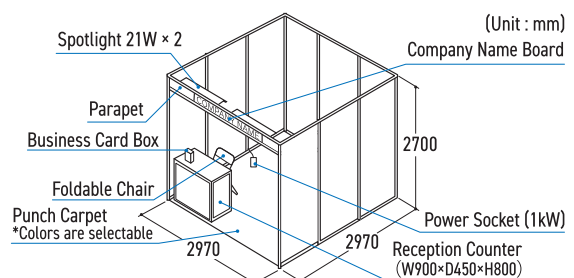
Basic installation services are available as a package, saving your time and effort of applying for each service separately. The plans, details and the application procedure will be guided in mid to late April 2025.

**1 Booth Spec.**

**Raw Booth Rental Fee + JPY 99,000**  
(Tax Included)

\*Package Display for 2 or more booths are also available.

\*If your electricity usage exceeds 1kW, application for additional electrical work will be necessary.



## Offers Online Exhibition Booth

\*Some functions are paid options

The online pages will be provided for all those who apply for an onsite exhibition.

In addition to basic information, images, videos, and detailed information about your products and services can be posted in your online exhibition booth. Please utilize the online exhibition booth as a tool to attract visitors to your onsite booth and for follow-up after the onsite exhibition. Some functions are available as paid options.

### Image of Online Exhibition Booth



### Optional Paid Menus (planned)

Provision of viewers' business card information



Questionnaire setup and Button installation



Webinar function (Provision of auditors' information)



\*How to apply for the optional menu will be announced in late March.

## Exhibitor Seminar

Only exhibitors will be provided with an opportunity to freely plan various methods to enhance the effectiveness of their exhibits. Please utilize these to explain and present detailed information on new products, technologies, services, introduction environments, and successful case studies that are difficult to express in the exhibition. Applications will be accepted on a first-come, first-served basis.

★Information on attendees (business card information) will be provided in data format later!

Fee

1 Session/40min.

JPY **110,000** [Tax Included]

\*Admission will be free for all sessions.

\*Seminar presenters are expected to prepare their own handouts and other materials.

\*Interpretation will not be provided.

### Time Schedule

Date and Time	Jul.16 Wed.	Jul.17 Thu.	Jul.18 Fri.	Jul.19 Sat.
10:30~11:10	A	G	M	S
11:30~12:10	B	H	N	T
12:30~13:10	C	I	O	U
13:30~14:10	D	J	P	V
14:30~15:10	E	K	Q	W
15:30~16:10	F	L	R	

### Image (Special stage in the venue)



## Application Procedures

### Application Deadline

**Mar. 21 (Fri.), 2025**

Applications would be even open after the application deadline as long as booth space is still available.

### How to apply to exhibit

Please be sure to read the "Exhibition Rules and Regulations" and apply only after agreeing to the regulations. Fill in the application form and send it to the secretariat by E-mail. Kindly note that application may not be accepted if the products and services are not appropriate for the exhibition.

#### ■Send application form to

Future Monodzukuri International EXPO Secretariat  
c/o THE NIKKAN KOGYO SHIMBUN  
E-mail: fmiexpo@nikkan.tech

### Payment of Exhibiting Fee

An invoice will be issued after your application has been officially accepted.  
Payment Deadline : Within one month from the date on the invoice.

### Change or Cancellation of Exhibit Contracts

If you change/cancel booths that have already been applied for, you need to specify the reason in writing and get approval from the secretariat.

\*The following cancellation handling fee will be applied.

**From application acceptance to March 31 (Mon.), 2025 : 50% of Booth Rental Fee**

**April 01 (Tue.), 2025 or after : 100% of Booth Rental Fee**

## Concurrent Events

A large number of international exhibitors and visitors are expected to attend.

### Japan International Occupational Safety and Health + Well-being (JIOSH+W)

Organizer : Messe Düsseldorf Japan

Safety is the top priority objective in the place for manufacturing and realizing Well-being needs "plus X". This exhibition steps forward for such objectives by focusing on the products and technologies that have functionality, advanced features, and design, bringing the aspects for workplace developments where people work with joy and pride.



Japan International Trade Fair for Occupational Safety & Health + Well-being

### Safety, Health and Well-being Days

Organizer : GISHW(Global Initiative for Safety Health & Well-being at EXPO2025 and beyond)

This event is one of the official programs of EXPO2025, and it marks the first time in World Exposition history that such a program is being held. It features a variety of content including international summits, symposiums, a festival, and technology exhibits (Well-being Tech) related to Well-being, and more.



Well-being Technology Exhibition Well-being Construction Technology Exhibition  
Well-being Fine Bubble Industry Exhibition



## Promotion and Advertising (Planned)

● Aim to attract users through paper coverage and continuous visit promotion linked to digital media!

### Newspaper

The exhibition will be announced in The Nikkan Kogyo Shimbun, a general industrial newspaper, to attract visitors. The newspaper will profile exhibitors and provide the latest information to attract potential end users to the exhibition.



### Digital media

Disseminate information through the "The Nikkan Kogyo Shimbun Electronic Edition" and "Newswitch", which disseminates the news and original contents of The Nikkan Kogyo Shimbun in a fresher and more friendly manner and will approach people other than newspaper subscribers.



### Invitation Flyer/DM, E-mail

Based on the original DM list held by The Nikkan Kogyo Shimbun and related organizations, we will send invitations and emails to related companies and organizations in Japan and overseas. In addition, we will provide exhibitors with invitations free of charge to support the mobilization of visitors.



### PR cooperation with Expo 2025 Osaka, Kansai, Japan

As a TEAM EXPO 2025 programme / Co-creation partner, this exhibition will be publicized on the official website of TEAM EXPO 2025.



### Digital Signage/ Web Advertising

Digital signage advertising in Osaka's business area and web banner advertisements on Google and other sites will promote this event.



\*In addition to the above, various other promotions are planned.

## Schedule (Planned)

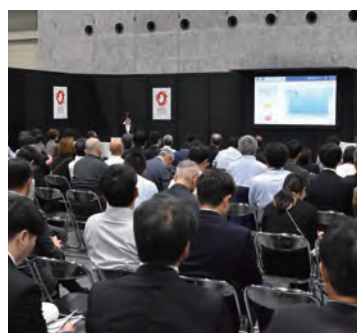
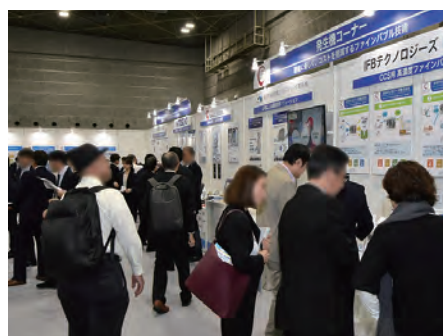
2025. Mar.	2025. Apr.	2025. May	2025. Jul.
▶ Mar.21(Fri.) Application Deadline	▶ Mid April Announcement of booth allocation	▶ Late May Deadline for required documents	Jul.14(Mon.) to 15(Tue.) ..... Move-in and Set-up Jul.16(Wed.) to 19(Sat.) ..... <b>ONSITE Exhibition</b> Jul.19.(Sat.) 4:00pm to 20(Sun.)11:59am ... Move-out and Removal

## Post Show Result (2024)

● Date : Nov.13(Wed) – 15(Fri.), 2024 ● Venue : Hall 2-3, INTEX OSAKA, Japan

**Onsite** 【Exhibition Scale】**216** exhibitors / **540** booths \*Including special exhibition zone, etc.  
【Number of Visitors】**14,115**

**Online** 【Number of Active users】**22,005**



# Exhibitor List of Previous Show (2024) (※Co-exhibitor)

3S Activity Promotion Association  
adore  
Advanced Telecommunications Research Institute International  
Aeterlink  
Agency Assist  
ALEX  
AMAGASAKI CHAMBER OF COMMERCE & INDUSTRY  
※ kansaikouji  
※ microb  
※ syoyo  
Aonbarr  
ARRK  
Association for Rational Administration (Osaka)  
Incorporation  
Association for the Promotion of Electric Vehicles  
Bioworks  
Blue Innovation  
Bunkashihon-soken  
CADDi  
Carbon Technologies Nippon  
CASIO COMPUTER  
CHAMPION CORPORATION  
CPS Laboratory, Saga University  
Curio  
DENARIPAM  
Eicoh  
EneCoat Technologies  
Fine Bubble Industries Association  
※ AKIMOKU IRON WORKS  
※ Fujikeiki  
※ HATANO SEISAKUSHO  
※ HITOWA Life Partner  
※ IFB Technologies  
※ Maruyama Mfg  
※ MTG  
※ NITTOSEIKO  
※ OK ENGINEERING  
※ Science  
※ Shibata  
※ West Nippon Expressway Engineering Kansai  
※ Yamato Scientific  
FingerVision  
FUJICHEMI KINKI  
Fujikin  
GLOBAL PARTS  
Harmonic Drive Systems  
Hundredths  
IDEC  
INDEPENDENCE  
INFORDIO  
iPresence  
Itoh Metal Working  
Japan Association for the 2025 World Exposition  
Japan Certification  
Japan Clean Ocean Material Alliance  
Japan Robot System Integrator Association  
Japanese Society of Additive Manufacturing  
※ APPLIED TECHNOLOGY  
※ IGUAZU  
※ MARUBENI INFORMATION SYSTEMS  
※ Mitsubishi Electric  
※ ORIX Rentec  
JGC JAPAN  
JIOSH+W - Japan International Occupational Safety and Health + Well-being  
JTEKT  
Kankyo Business(Sendenkaigi)  
Kawamura Gishi  
Kawamura International  
Kawasaki Heavy Industries  
KingParts  
KOCHI INDUSTRIAL PROMOTION CENTER  
※ INFRA MANAGEMENT  
※ Mirocrea  
※ CENTER MIROKU TECHNO WOOD  
※ CENTER YAMANOKUJIRA  
Kyoto Research Park  
KYOTO SHISAKU NET  
Kyowa Stainless  
Labour-saving investment subsidy secretariat  
LUNDATTE

MEIJI AIR COMPRESSOR MFG  
MITSUBISHI ELECTRIC ENGINEERING  
Mutsuki Electric  
NANIWA AKINDO JUKU  
National Institute of Advanced Industrial Science and Technology (AIST)  
NC Network  
NIIDA BUSSAN  
NTT Business Solutions  
OSAKA BUSINESS DEVELOPMENT AGENCY  
Osaka City Industrial Management Association  
Osaka Cross industry Council  
Osaka Heat Cool  
Osaka Management Support network  
OSAKA RASENKAN KOGYO  
Osaka Research Institute of Industrial Science and Technology  
OSAKA SANGYOJIN CLUB  
POCKETALK  
PONY INDUSTRY  
PRESS GIKEN  
RAKURAKU TOSOYASAN  
※ FUKUMOTO KOGYO  
※ PREMS CREATIVE  
RIDE DESIGN  
Robofull  
SANKYO PLUS  
SANYO DENKI  
SDGs Social Design Association  
Seaside Robotics  
SEKISEI  
Senin technologies  
SGK  
ShinMaywa Industries  
Shinshu TLO  
Shuman  
SIRIUS  
SKC International Corporate Development Organization  
St. Marianna University School of Medicine  
SUMIRON  
Tebiki  
Technical  
TECHNOA  
Techno-labo  
TESLA  
The Institute of Global Safety Promotion  
※ DAIWA HOUSE INDUSTRY  
※ IDEC  
※ PATLITE  
※ Tanac  
※ TOYOTA MOTOR  
※ YASKAWA Electric  
TOHAN DENSHI KIKI  
TopoLogic  
WaaS Co-creation Consortium  
World Robot Summit  
Yokohama National University / CUP-K  
Zhejiang Business Support Center  
ZMP  
New Value Creation Exhibition  
A.R.I  
AITECH  
ART SCREW  
Asahi Onkyo  
Asahomolding  
ATELIER-K  
Caz International  
COMVIC  
DAIWA KAKOU  
DENTO Japan  
DigitalMirai  
ECOVENT

EL-OKAMOTO  
ERG  
FEC  
Fermelanta  
FUJIKIKOSAN  
Genzen  
Gunma Seiko  
H&C TECHNICALLABORATORY  
HACHIX  
HASHIBA INTERNATIONAL  
HIRAI INDUSTRY  
HIROTEC  
Iijima Machinery  
International Technology Transfer Corporation  
Justec  
Kashima Bearings  
KAWABE SHOKAI  
KAWANAMI IRONWORKS  
KIGUCHI TECHNICS  
Kitahama Chemistry  
Kochi Kigata Kogyo  
Kyokuto  
Logica Education  
Matsui Shikiso Chemical  
MICRO VEHICLE LAB  
MISUZU  
MITSUBOSHI DIAMOND INDUSTRIAL  
Miyasaka Industries  
murakami  
murozumisekkei  
MUTSUMI INDUSTRY  
NAGAMINE MANUFACTURING  
NAKAZATO SPRING  
NISHIGAKI SOCKS  
NISHIKENDEVISE  
OGUSU INDUSTRY  
OHTSUKA CERAMICS  
Oisaka Electronic Equipment  
OTSUKASEIKO  
PLABOTEC  
Saijo Inx  
SAKIGAKE-Semiconductor  
SalesOne  
Sanko-Giken  
Sensyo  
Shibase Industry  
Shiko Tech  
SHINWA IRON WORKS  
SiB  
SION SYSTEM  
Snowlion  
Sonas  
SOUYA  
STC  
Sun-Add  
Symbiosis  
TADAPLA  
TAKAMATSU TEISAN  
TAKAYAMAKSEI  
TDI ELECTRONICS  
Tierra  
Tokyo Tan-ichi  
TOYO YOZAI  
TSUGAWA  
VISTA  
Y drive  
Yamagishi Seisakusho  
y-mold



Contact for  
Application &  
Inquiry

Future Monodzukuri International EXPO Secretariat  
c/o THE NIKKAN KOGYO SHIMBUN, LTD.

14-1 Nihonbashi Koami-cho, Chuo-ku, Tokyo 103-8548, Japan E-mail : [fmiexpo@nikkan.tech](mailto:fmiexpo@nikkan.tech)  
<https://fmiexpo.nikkan.co.jp>



Official Website