



OSAKA, KANSAI, JAPAN
EXPO
2025

Exhibition Guide

Application Deadline:
Feb. 20 (Thu.), 2025



Supporting Organization:
Japan Association for the 2025 World Exposition

Future Monodzukuri International EXPO

2025

Date

2025
July 16 - 19
Wed. Sat.

10:00 am to 5:00 pm
*Until 4:00 pm on the last day

Venue

INTEX OSAKA, Japan

Concurrent Events

Japan International Trade Fair for Occupational Safety and Health + Well-being (JIOSH+W) [Organizer: Messe Düsseldorf Japan]
Safety, Health and Well-being Days [Organizer: GISHW]

Organizer: Future Monodzukuri International EXPO Executive Committee

Greeting

Expo 2025 Osaka, Kansai will be held as an international exposition under the theme of "Designing Future Society for Our Lives" toward the realization of SDGs and wellbeing in addition to utilizing the latest technologies such as digital, robotics, and GX. In light of this situation, Future Monodzukuri International EXPO Executive Committee held the first "Future Monodzukuri International EXPO" in Osaka in May 2023 with the cooperation of the Japan Association for the 2025 World Exposition and other related organizations. As an international trade fair in conjunction with the Expo 2025 Osaka, Kansai, Future Monodzukuri International EXPO will bring together outstanding products and technologies supporting industries and disseminate them both domestically and internationally. This fair also facilitates opportunities for business meetings and interaction through exhibits and forums.

Future Monodzukuri International EXPO 2025, held in July is along with the event dates of Expo 2025 Osaka, Kansai. A large number of exhibitors and visitors from Japan and overseas are expected to participate.

We look forward to your exhibits and cutting-edge technologies solving industrial issues and design a bright future society.



©Expo 2025



Exhibition Outline

Onsite

Date : Jul. 16 (Wed.) – 19 (Sat.), 2025
Opening Hours : 10:00 am to 5:00 pm *until 4:00 pm on Jul. 19
Venue : INTEX OSAKA, JAPAN
Admission : Free * Registration required
*No need to register for the age of under junior high school students

Online (on the website)

Date : Jul. 1 (Tue.) – 31 (Thu.), 2025
Admission : Free * Registration required

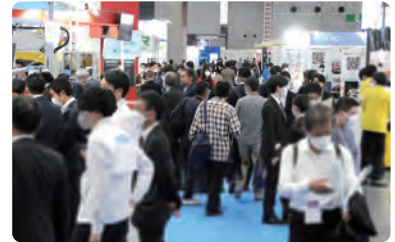
Organizer : Future Monodzukuri International EXPO Executive Committee
 (MONODZUKURI.Nihon.Conference / Osaka Convention & Tourism Bureau / Osaka Cross industry Council / Osaka City Industrial Management Association / SKC International Corporate Development Organization / Association for Rational Administration (Osaka) Incorporation / Japan Robot Association / Fine Bubble Industries Association / The Institute of Global Safety Promotion / 3S Activity Promotion Association / THE NIKKAN KOGYO SHIMBUN)

Co-Organizers : MONODZUKURI.Nihon.Conference
 THE NIKKAN KOGYO SHIMBUN (TEAM EXPO 2025 Programme / Co-creation Partner)

Supporting Organization : Japan Association for the 2025 World Exposition

Cooperating Organizations : Ministry of Economy, Trade and Industry / Ministry of Internal Affairs and Communications / Ministry of Land, Infrastructure, Transport and Tourism / Ministry of Health, Labour and Welfare / Japan External Trade Organization (JETRO) / Organization for Small & Medium Enterprises and Regional Innovation, JAPAN / New Energy and Industrial Technology Development Organization (NEDO) / National Institute of Advanced Industrial Science and Technology / Osaka Prefectural Government / Osaka City / Higashi Osaka City / Osaka Convention & Tourism Bureau / Osaka Business Development Agency / The Japan Chamber of Commerce and Industry / The Osaka Chamber of Commerce and Industry / The Higashiosaka Chamber of Commerce and Industry / International Institute for Advanced Studies / Japan Business Federation / Kansai Economic Federation / Kansai Association of Corporate Executives / Japan Machinery Federation / Japan Robot Association / Nippon Electric Control Equipment Industries Association / Fine Bubble Industries Association / The Institute of Global Safety Promotion / Micro Manufacturing Association / 3S Activity Promotion Association etc.

Concurrent Events : Japan International Trade Fair for Occupational Safety and Health + Well-being (JIOSH+W) [Organizer: Messe Düsseldorf Japan] Safety, Health and Well-being Days [Organizer: GISHW (Global Initiative for Safety Health & Well-being at EXPO2025 and beyond)]



Locations of INTEX Osaka and EXPO2025 Venues

Osaka Metro Chuo Line will be expanded for the closest station to EXPO2025 venues from the Cosmosquare Station in February 2025. Concurrent events will also be held alongside the main exhibition at EXPO Messe (Common call: WASSE) during the period of Future Monodzukuri International EXPO.



Provided by Japan Association for the 2025 World Exposition

Exhibit Category

● Manufacturing Core Technology

Metal machine tool, Metal forming machine, Machine accessory, Numerical control unit, Sensor, Inspection / Measurement, Material / Electronic material, Various tools, etc.

Microfabrication Zone

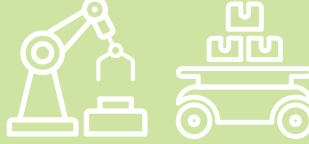
For Microfabrication technology, Processing machines, Tools, etc.

Small-lot Production / Prototype Plaza

For companies specializing in small-lot production and prototype processing.

● Robot / Robot Related Technology

Industrial robot, Service robot, Robot Sler (Robot System Integrator), Robot simulation & Vision systems, Transfer robot, AGV, etc.



● Advanced Technology

DX (Digital transformation), IoT (Internet of Things), AI, Metaverse, Drone, etc.



Smart Mobility Zone

For mobility utilizing advanced technologies such as self-driving technology, AI, etc.

Human Resource Development Zone

For human resource development services and products utilizing IT, AI, etc.

● Water Technology / Fine Bubble / Environmental Technology

Fine bubble, Water related technology, Green infrastructure, Carbon neutral, Environmental purification technology, etc.

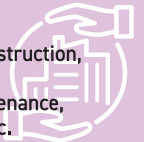


GX (Green Transformation) Zone

For products and services utilizing clean energy with low environmental impact.

● Factory Construction / Factory Disaster Prevention

Technology and systems related to factory construction, energy-saving systems in factories, security, preventive maintenance, BCP, in-factory maintenance, disaster prevention and mitigation systems, etc.



● Aerospace

Space equipment, Space related systems / services / devices, Satellite utilization business, etc.



● Well-being Tech

Technologies and products in various industrial fields (manufacturing and construction/civil engineering and machinery/electricity, environment, and daily life) for making people and society Well-being "happy, safe, healthy, convenient, and resilient".



Raw Booth Rental Fee / Booth Specification

All the Onsite exhibitors will be provided the Online exhibiting booth for free!

1 Raw Booth Rental Fee

(Width 2.97m x Depth 2.97m x Height 2.7m : Approx. 9m²)

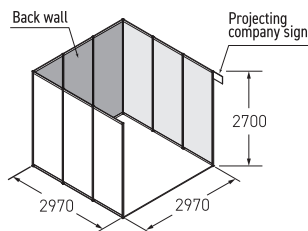
Special price for companies and organizations participating in TEAM EXPO 2025 programme

JPY 341,000 (Tax included)

General price

JPY 396,000 (Tax included)

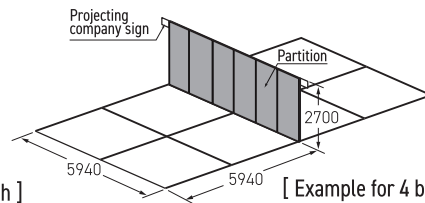
【 Inline Booth 】



[Example for 1 booth]

【 Multiple Raw Booth 】

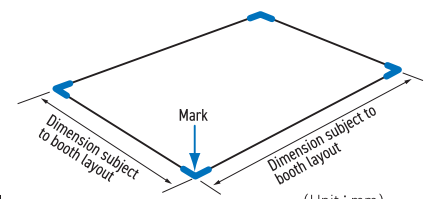
*Depth: 2 booths or more
*The number of aisles may change depending on the layout.



[Example for 4 booths]
In case of 3 side aisles open

【 Island Booth 】

*Applicable for 8 booths or more



*Power supplies, lights, carpets, etc. are not included in any type of booth.

*For corner booths, the partition on the aisle side will not be provided. *In principle, back wall cannot be removed with or without adjacent booth.

【Option】 Package Display *Reference : Basic Package Display for 1 Booth

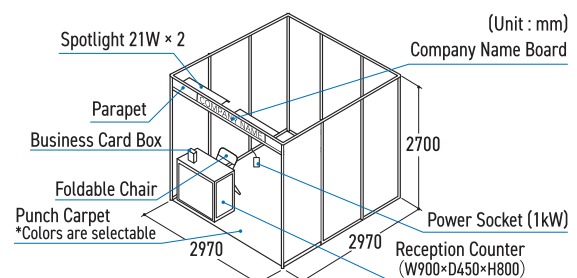
Basic installation services are available as a package, saving your time and effort of applying for each service separately. The plans, details and the application procedure will be guided in late March 2025.

1 Booth Spec.

Raw Booth Rental Fee + JPY 99,000
(Tax Included)

*Package Display for 2 or more booths are also available.

*If your electricity usage exceeds 1kW, application for additional electrical work will be necessary.



Offers Online Exhibition Booth *Some functions are paid options

The online pages will be provided for all those who apply for an onsite exhibition. In addition to basic information, images, videos, and detailed information about your products and services can be posted in your online exhibition booth. Please utilize the online exhibition booth as a tool to attract visitors to your onsite booth and for follow-up after the onsite exhibition. Some functions are available as paid options.

Image of Online Exhibition Booth



Optional Paid Menus (planned)

Provision of viewers' business card information



Questionnaire setup and Button installation



Webinar function (Provision of auditors' information)



*How to apply for the optional menu will be announced in late March.

Exhibitor Seminar

Only exhibitors will be provided with an opportunity to freely plan various methods to enhance the effectiveness of their exhibits. Please utilize these to explain and present detailed information on new products, technologies, services, introduction environments, and successful case studies that are difficult to express in the exhibition. Applications will be accepted on a first-come, first-served basis.

★Information on attendees (business card information) will be provided in data format later!

Fee

1 Session/40min.

JPY **110,000** [Tax Included]

*Admission will be free for all sessions.

*Seminar presenters are expected to prepare their own handouts and other materials.

*Interpretation will not be provided.

Time Schedule

Date and Time	Jul.16 Wed.	Jul.17 Thu.	Jul.18 Fri.	Jul.19 Sat.
10:30~11:10	A	G	M	S
11:30~12:10	B	H	N	T
12:30~13:10	C	I	O	U
13:30~14:10	D	J	P	V
14:30~15:10	E	K	Q	W
15:30~16:10	F	L	R	

Image (Special stage in the venue)



Application Procedures

Application Deadline

Feb. 20 (Thu.), 2025

Applications would be even open after the application deadline as long as booth space is still available.

How to apply to exhibit

Please be sure to read the "Exhibition Rules and Regulations" and apply only after agreeing to the regulations. Fill in the application form and send it to the secretariat by E-mail. Kindly note that application may not be accepted if the products and services are not appropriate for the exhibition.

■Send application form to

Future Monodzukuri International EXPO Secretariat
c/o THE NIKKAN KOGYO SHIMBUN
E-mail: fmiexpo@nikkan.tech

Payment of Exhibiting Fee

An invoice will be issued after your application has been officially accepted.
Payment Deadline : Within one month from the date on the invoice.

Change or Cancellation of Exhibit Contracts

If you change/cancel booths that have already been applied for, you need to specify the reason in writing and get approval from the secretariat.

*The following cancellation fee will be applied.

From application acceptance to March 17 (Mon.), 2025 : 50% of Booth Rental Fee
March 18 (Tue.), 2025 or after : 100% of Booth Rental Fee

Concurrent Events

Japan International Occupational Safety and Health + Well-being (JIOSH+W)

Organizer : Messe Düsseldorf Japan

Safety is the top priority objective in the place for manufacturing and realizing Well-being needs "plus X". This exhibition steps forward for such objectives by focusing on the products and technologies that have functionality, advanced features, and design, bringing the aspects for workplace developments where people work with joy and pride.



Safety, Health and Well-being Days

Organizer : GISHW(Global Initiative for Safety Health & Well-being at EXPO2025 and beyond)

This event is one of the official programs of EXPO2025, and it marks the first time in World Exposition history that such a program is being held. It features a variety of content including international summits, symposiums, a festival, and technology exhibits (Well-being Tech) related to Well-being, and more.



Promotion and Advertising (Planned)

● Aim to attract users through paper coverage and continuous visit promotion linked to digital media!

Newspaper

The exhibition will be announced in The Nikkan Kogyo Shimbun, a general industrial newspaper, to attract visitors. The newspaper will profile exhibitors and provide the latest information to attract potential end users to the exhibition.



Invitation Flyer/DM, E-mail

Based on the original DM list held by The Nikkan Kogyo Shimbun and related organizations, we will send invitations and emails to related companies and organizations in Japan and overseas. In addition, we will provide exhibitors with invitations free of charge to support the mobilization of visitors.



PR cooperation with Expo 2025 Osaka, Kansai, Japan

As a TEAM EXPO 2025 programme / Co-creation partner, this exhibition will be publicized on the official website of TEAM EXPO 2025.



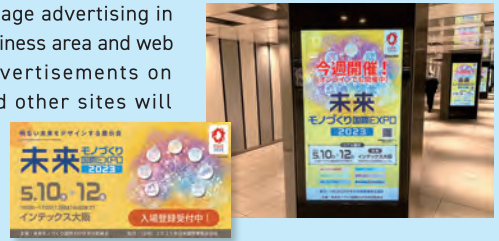
Digital media

Disseminate information through the "The Nikkan Kogyo Shimbun Electronic Edition" and "Newswitch", which disseminates the news and original contents of The Nikkan Kogyo Shimbun in a fresher and more friendly manner and will approach people other than newspaper subscribers.



Digital Signage/ Web Advertising

Digital signage advertising in Osaka's business area and web banner advertisements on Google and other sites will promote this event.



*In addition to the above, various other promotions are planned.

Schedule (Planned)



Post Show Result (2023)

● Date : May 10(Wed.) - 12(Fri.), 2023 ● Venue : Hall 1•2, INTEX OSAKA, Japan

Onsite

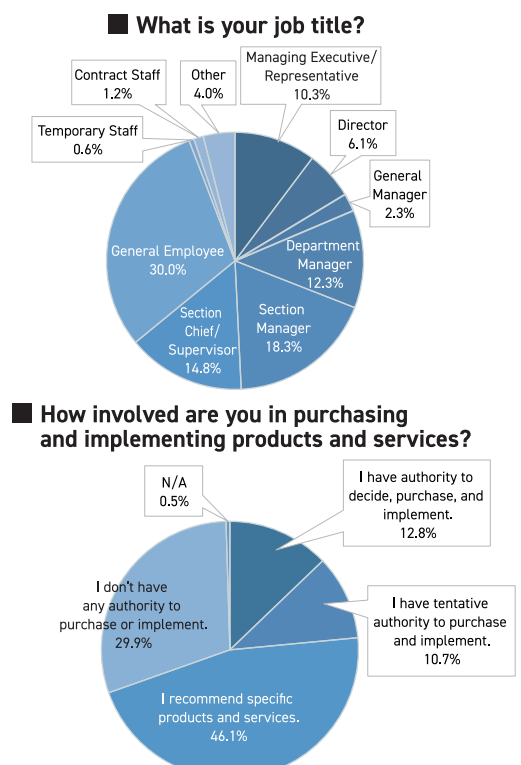
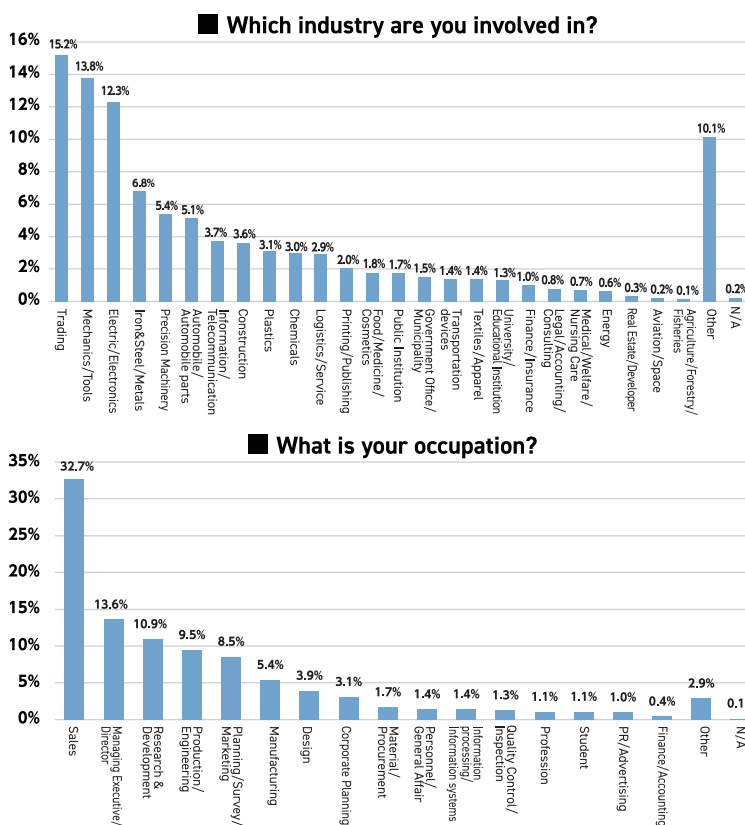
[Exhibition Scale] **187** exhibitors / **368** booths *Including special exhibition zone, etc.
[Number of Visitors] **13,210**

Online

[Exhibition Scale] **13** exhibitors [Number of Active users] **24,223**
[Page Views] **114,459** PV



Results of Visitor Questionnaire (2023)



The Post show report of the Future Monodzukuri International EXPO 2023 event is posted on the official website.

★The result of the 2024 show is scheduled to be published on the official website in January 2025.

"a" Institute of Environment
100nen Keiei no Kai
3S Activity Promotion Association
Aero G Lab
Agency Assist
AREUSE
※AREUSE HORKOS
ARRK
ASAHI TEKKO
ASIOT
ASSOCIATION FOR RATIONAL ADMINISTRATION (OSAKA)
INCORPORATION
Association for the Promotion of Electric Vehicles
Aubo (Beijing)Robotics Technology
Automatic Industrial
※Takashima Clinic
※TOKIWA SEIKO
DAIFUKU ☆
Daiwa House Industry ☆
Disaster Risk Reduction Industry
Conference of Japan
Eicoh
Embassy of Switzerland in Japan
FANUC
Fine Bubble Industries Association
※HATANO SEISAKUSHO
※HITOWA Life Partner
※IDEC
※ISO/TC 281 Booth
※Maruyama Mfg.
※MTG
※NITTOSEIKO
※OK ENGINEERING
※Science
※shibata
※West Nippon Expressway Engineering Kansai
※YBM
First Automation
Fujikin
Fundación Internacional ORP ☆
GERMAN SOCIAL ACCIDENT INSURANCE ☆
GLOBAL PARTS
G-NET
Harmonic Drive Systems
HCI
HILLTOP
HIRAOKA HYPER TOOLS
※nextscience
HOKUYO AUTOMATIC
HUMAN HOUSE ☆
IDEC ☆
IES
IGSAP Construction Committee ☆
※ENZAN KOUBOU ☆
※Hitachi Construction Machinery ☆
※KAJIMA ☆
※NISHIO T&M ☆
※OBAYASH ☆
※SHIMIZU ☆
INFICON
Institute Of Aggricatural Machinery,NARO ☆
Institution of Occupational Safety and Health ☆
Intermedia Laboratory
※KEISUUGIKEN
International Labour Organization ☆
International Association of Labour Inspection ☆
INTERNATIONAL SOCIAL SECURITY ASSOCIATION ☆

Japan 3D PRINTER
Japan Association for the 2025 World Exposition
JAPAN CERTIFICATION
Japan Industrial Safety and Health Association ☆
Japan Medical Beauty Therapist Association
Japan Ready-made Meal Association
Japan Robot System Integrator Association
Japanese Society of Additive Manufacturing
※IFUKU SEIMITSU
※APPLIED TECHNOLOGY
※J-3D
※JBM Engineering
※MORIMURA BROS
※ODEC
※Osaka Yakin Kogyo
※TACHIBANA ELETECH
Japanese Standards Association ☆
JGC ☆
JGC JAPAN
※Brownreverse
KAWAMURA GISHI
Kochi industrial promotion center
※GIKEN
※InfraManagement
※Mirocrea
※MIROKU Machine Tool
※MIROKU TECHNO WOOD
※NIPPON KODOSHI
※TOMINAGA
※UJIDEN CHEMICAL INDUSTRY /
KOCHI UNIVERSITY OF TECHNOLOGY
Kyoung Do Industry
LAUREL BANK MACHINE ☆
Lock
MaibornWolff ☆
MAIKON NO KOHARA
MARUICHI CUTTING TOOLS
MARUYASU
MD PRESS KOGYO
Micro Manufacturing Association
※Azumi Techno
※CASTEM
※Iwata Tool
※MATSUDA
※Mitsuikuin
※Roku-Roku Sangyo
※Saito Seisakusho
Ministry of Economy, Trade and Industry
MITEC
Mitsubishi Electric
MITSUBISHI ELECTRIC ENGINEERING ☆
Miyako Printing Ink
Mobile Industrial Robots
MONODZUKURI.Nihon.Conference
Moxa Japan
MUSCLE ☆

Mutsuki Electric
NABELL CORPORATION
National Institute of Advanced Industrial
Science and Technology ☆
NC Network
Nikon Corporation
NITTO KOGYO
NTN Technical Service
Occupational Safety and Health Council ☆
OKUNO CHEMICAL INDUSTRIES
Osaka City Industrial Management Association
Osaka Convention & Tourism Bureau/Osaka
Business Development Agency/Osaka Research
Institute of Industrial Science and Technology/
City of Osaka
Osaka Cross-industry Council
OSAKA RASENKAN KOGYO
OSG
OUTSENSE
Panasonic Production Engineering ☆
Pasona Panasonic Business Service
PRESS GIKEN
Railsolutions ☆
Resona Bank
Robot Friendly Asset Promotion Association
RT.WORKS
S.K.H
SANKYO PLUS
SCHUNK Intec Japan
SEKISEI
SGK
SHIMIZU
SHIMIZU ☆
SK International Corporate Development Organization
SME Support
SOMEITEC
SquareDog Robotics ☆
SSO Malaysia ☆
Sunadvance
SUNUP
TABUCHI
Tebiki
TECHNO TAKATSUKI
Technoa
The 10th Robot Award
THINKY
THK
TOYOTA MOTOR ☆
U Universal Robots
V VANTECH
Waas Co-creation Consortium
Wovn Technologies
Yamada Manufacturing
YUASA NEOTEC
Yuden Group



Contact for
Application &
Inquiry

Future Monodzukuri International EXPO Secretariat
c/o THE NIKKAN KOGYO SHIMBUN, LTD.

14-1 Nihonbashi Koami-cho, Chuo-ku, Tokyo 103-8548, Japan E-mail : fmiexpo@nikkan.tech
<https://fmiexpo.nikkan.co.jp>



Official Website